



Physiotherapists and Return to Work

Paul Coburn

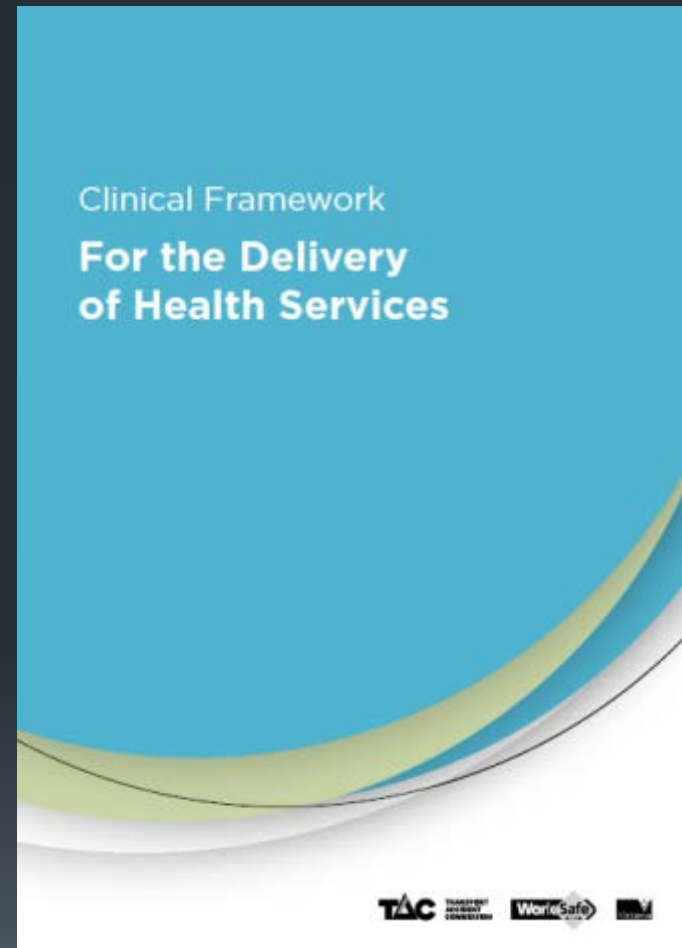
Occupational Physiotherapy Program

- Initiative to trial a physiotherapy network provider model to test the feasibility of establishing contracts with physiotherapists
- Implemented by the Transport Accident Commission (TAC) in 2008 and later by the Victorian Workcover Authority (VWA) to deliver better health outcomes, efficient management, and improve scheme viability.
- Recruited:
 - February 2008 44 Physiotherapists Select Tender
 - June 2010 44 Physiotherapists Selected by Application
 - August 2011 145 Physiotherapists Selected by Application
 - July 2012 50 Physiotherapists Selected by Application
 - Increased fee (~20%)

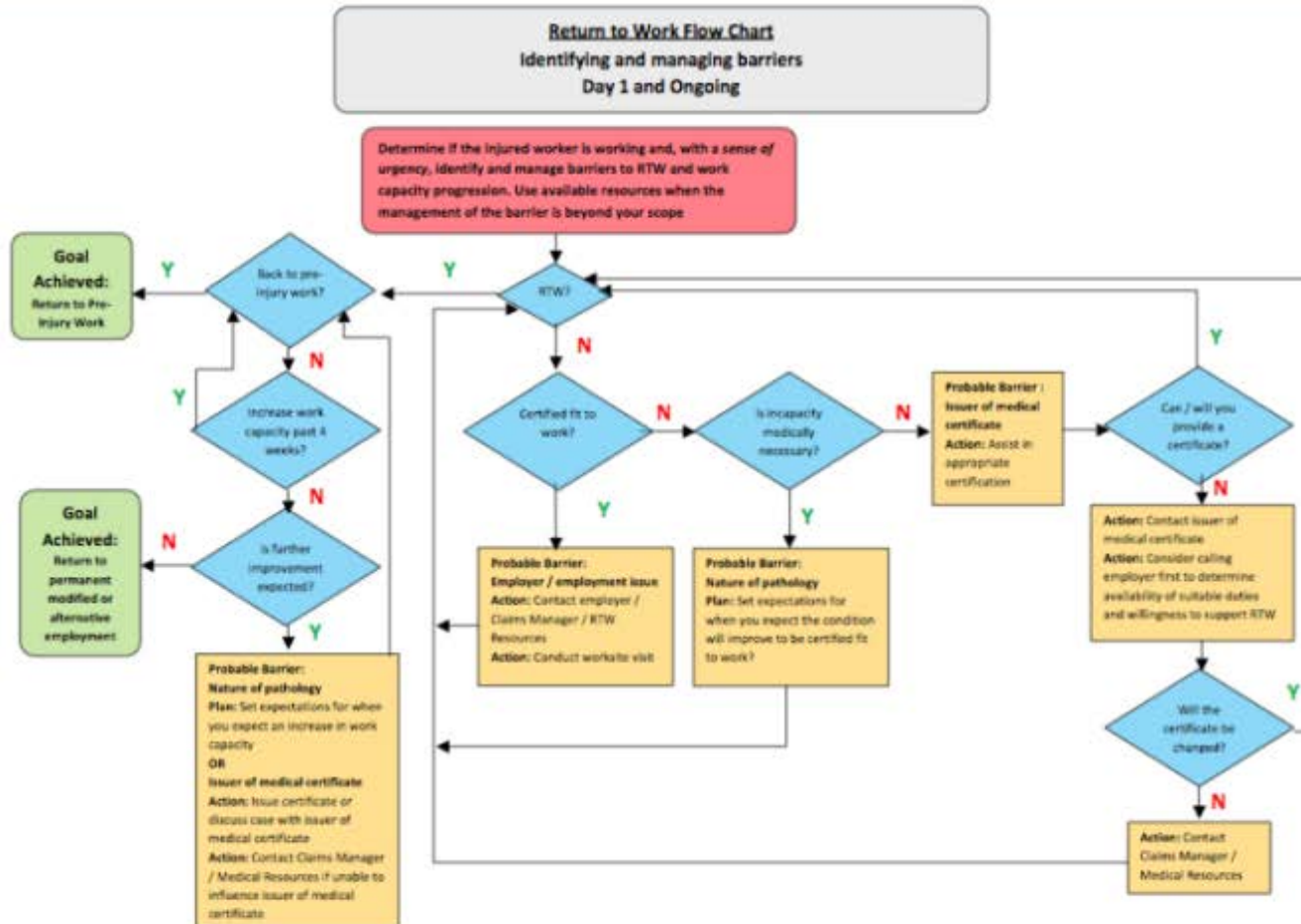
Occupational Physiotherapy Program – 2011 Training

5.5 hours

1. Clinical Framework
2. RTW
3. Understanding the compensable system



Occ Physio RTW Flowchart



Health Outcomes

PHYSIOTHERAPY RESEARCH INTERNATIONAL

Research Article

Health Outcomes can be Improved by Implementing an Occupational Physiotherapy Provider Programme

Tania Pizzari , Megan Davidson

First published: 26 July 2012 [Full publication history](#)

DOI: 10.1002/pri.1533 [View/save citation](#)

Cited by: 0 articles [Check for new citations](#)

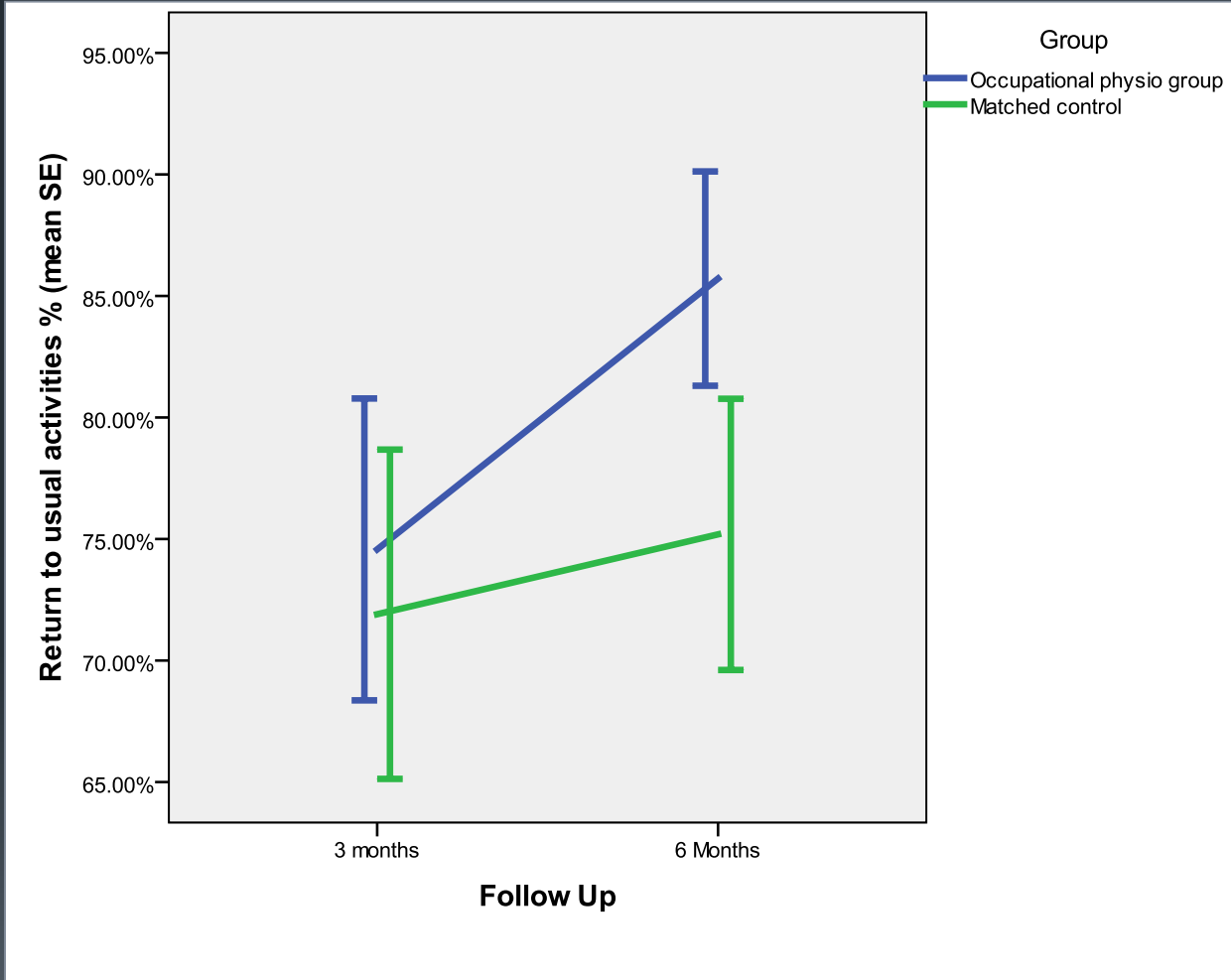


Volume 18, Issue 1

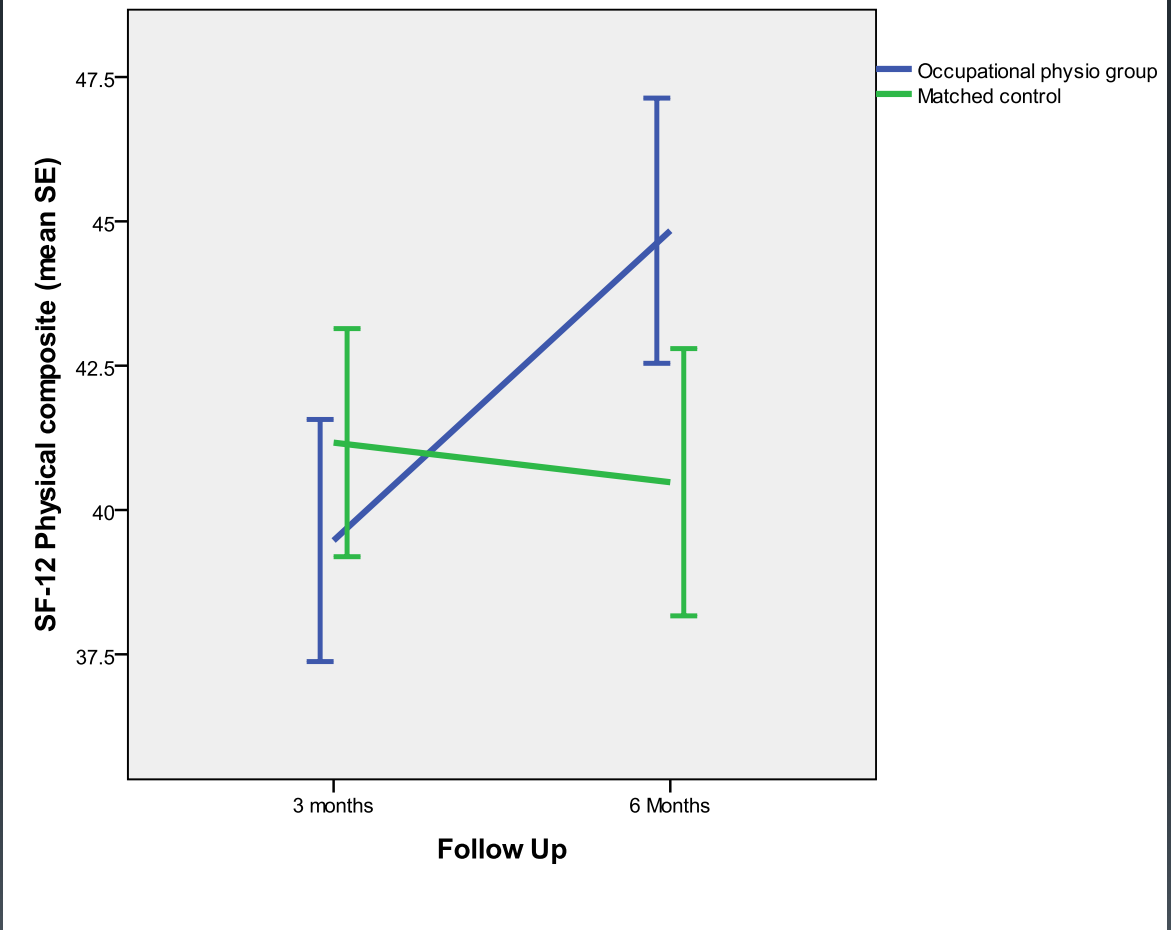
March 2013

Pages 47-54

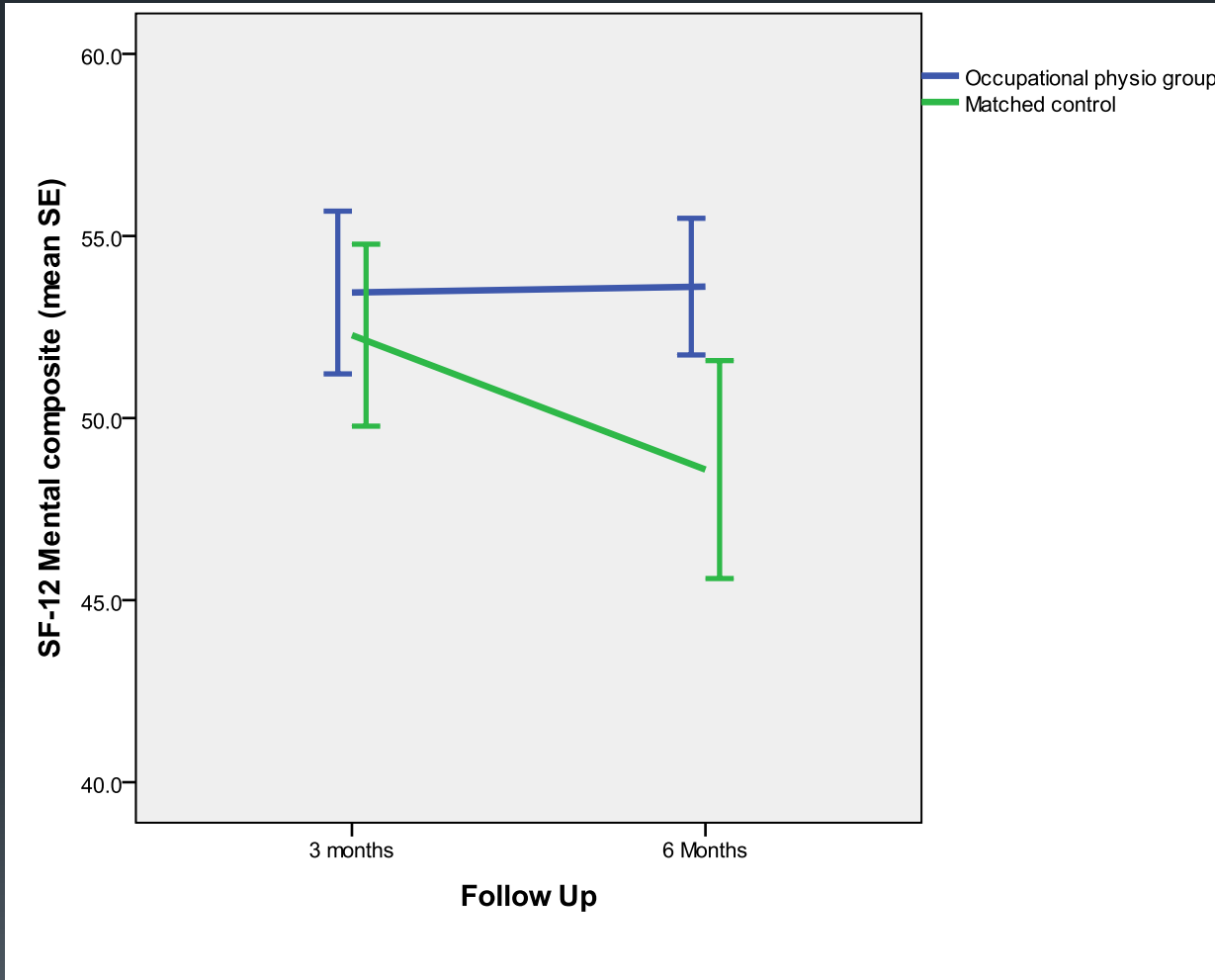
Results - RTUA



Results – SF-12 physical



Results – SF-12 mental



Results – Costs @ 12 months

	Occupational Physiotherapy		Non-Occ Physiotherapy		<i>p</i>
	Mean	Median	Mean	Median	
Medical and Like	\$4236	\$2429	\$5462	\$3568	0.02
Income Support	\$2846	\$1389	\$5124	\$1902	0.046
Physiotherapy	\$1297	\$1050	\$1405	\$1064	0.69

Results - Return to Work

- At 3 months 90% of Occ Physio claimants had returned to work compared with 81% of non-occupational physio claims (p=0.059)
 - RR = 1.8
 - 1.8 times more likely to return to work by 3 months if an Occ Physio client
- At 6 months 98% Occ Physio claimants had returned to work compared with 90% of non-occupational physio claims (p=0.02)
 - RR = 3.3
 - 3.3 times more likely to return to work by 6 months if an Occ Physio client

Were they just better physios?

- Sample two year prior to program
- 1771 Non-Occ physio claims, 81 Occ-Physio claims
- No significant difference in RTW values at 6 months ($p=0.38$)

	Occupational Physiotherapy	Non-Occ Physiotherapy	
	Mean	Mean	<i>p</i>
Medical and Like	\$4838	\$5688	0.74
Income support	\$11527	\$12515	0.30
Physiotherapy	\$952	\$1090	0.95

Worker Satisfaction

Satisfaction levels, both overall and in relation to key service aspects is higher among Physiotherapy Network respondents than among Physiotherapy Non-Network respondents...

PHYSIOTHERAPY TOP 2 BOX (Completely/Very Satisfied)		
	Network (99) %	Non-Network (98) %
Satisfaction overall	84	75
Providing you with the support you need to return to work	80	59
Providing you with the support you need to return to everyday activities	76	65
Explaining what you could expect form the treatment process	79	60
Answering your questions about WorkSafe	81	58
Providing you with the advice to help you to manage your injury by yourself	81	68
Explaining how long the treatment process might take	72	53
Note: Circled figures denote statistically significant sub-group differences and sample sizes are shown in brackets		

Conclusion

- Physiotherapists are key personnel in managing the physical needs of compensable clients
- Physiotherapists are well positioned to certify capacity and facilitate return to work
- Physiotherapy training can further improve health and return to work outcomes, while reducing costs and maintaining worker satisfaction

Links for WorkSafe Training Presentations

- Go to PIEF
- >> Health Professionals
- >> Allied Health VIC
- 6 Clips looking at the “How to” of Return to Work